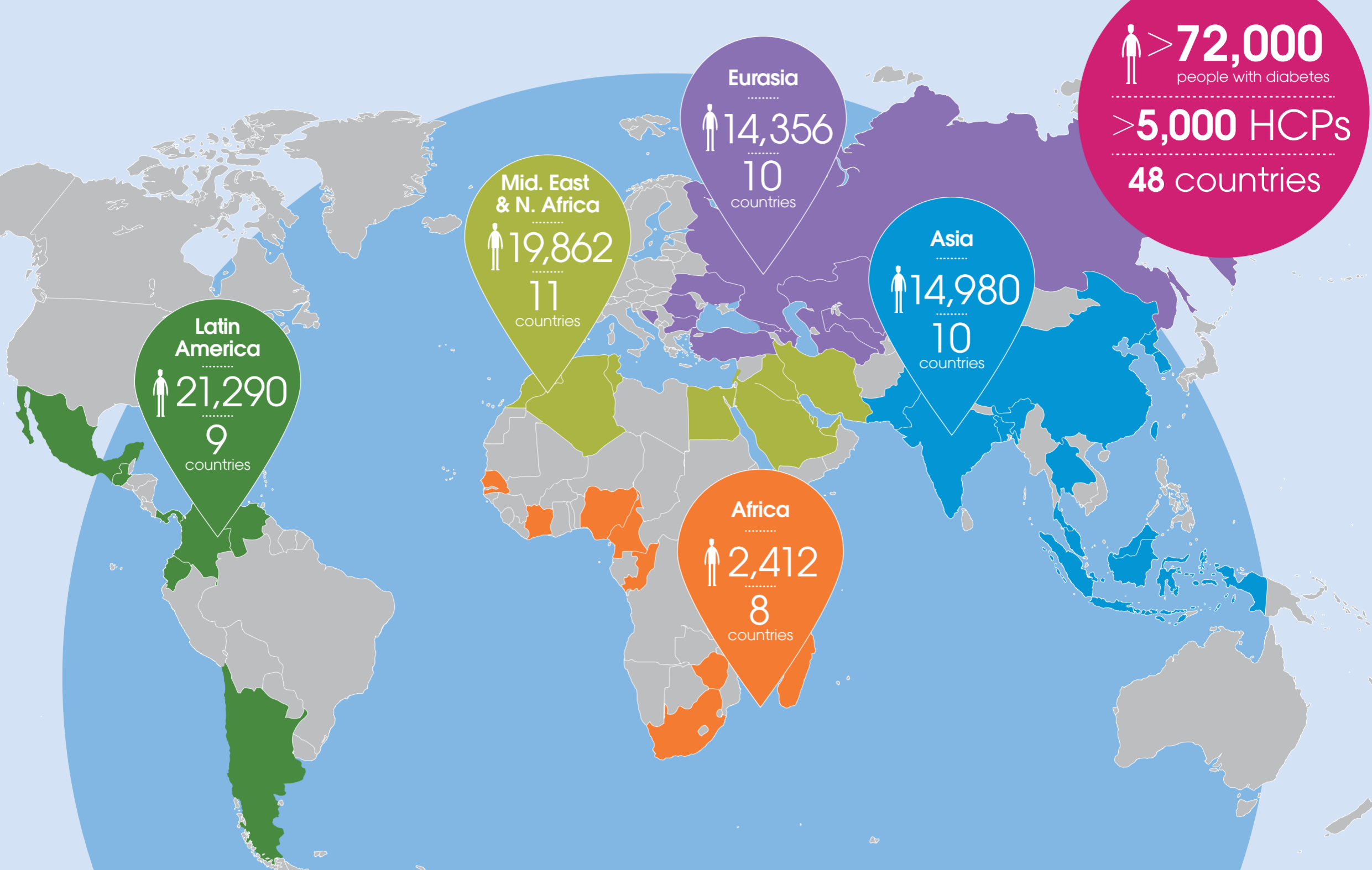


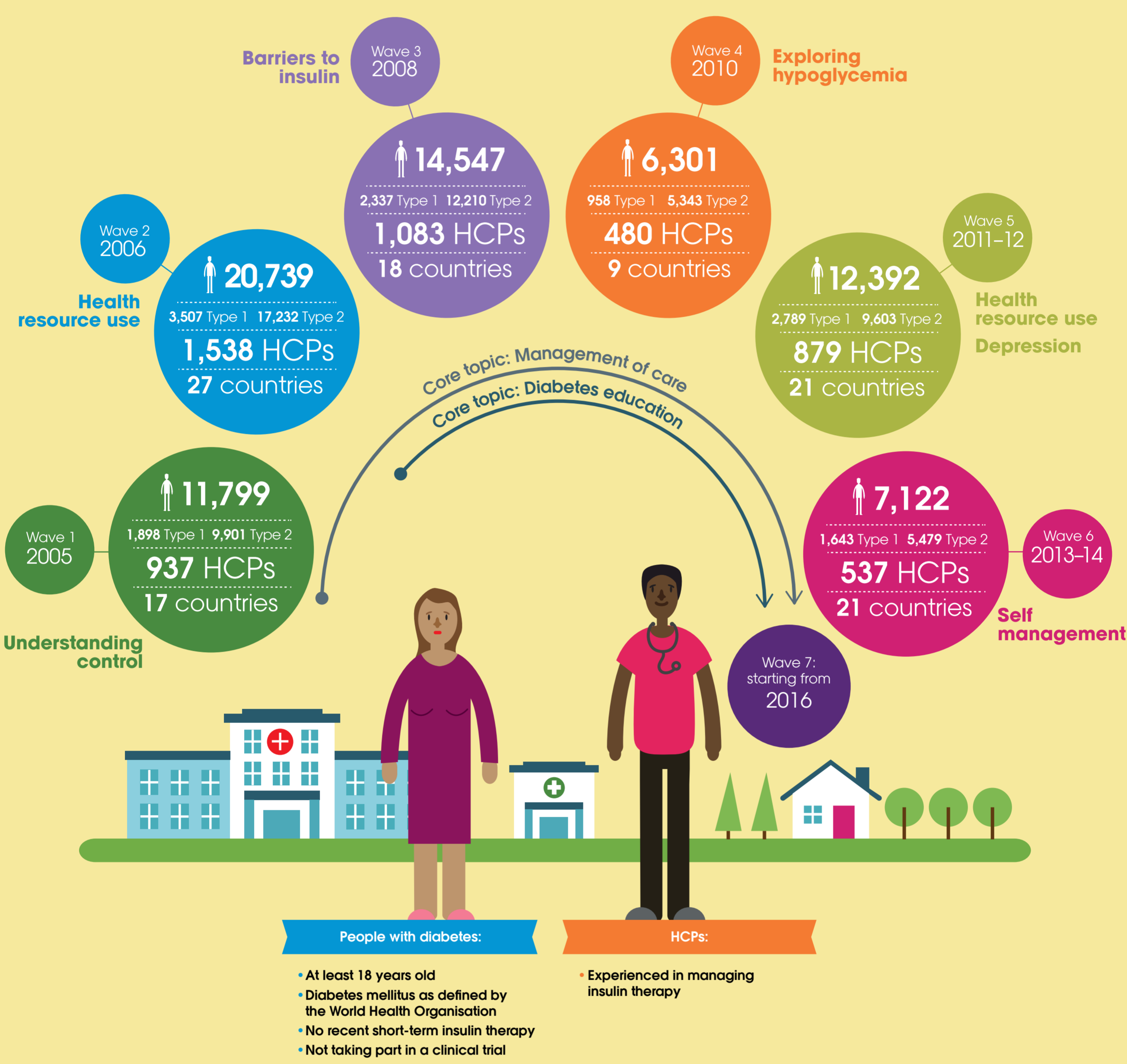
The IDMPS is the largest observational study of adult diabetes care in the developing world

Since 2005 it has provided a unique resource to help support the management of people living with diabetes



Since 2005 the IDMPS has been expanding the understanding of diabetes management

Wave specific topics supplement the core objectives to enrich the value of the study



The IDMPS is revealing the real-life challenges of managing diabetes



The IDMPS is led by a steering committee of diabetes experts

They recognize the unique value of the IDMPS



Find out more



References: Sanofi data on file and 1. Chan JCN, et al. Diabetes Care 2009;32:227-233. 2. Ringborg A, et al. Int J Clin Pract 2009;63:997-1007. 3. Casciano R, et al. Int J Clin Pract 2011;65:408-414. 4. Gagliardino JJ, et al. Diabetes Metab 2012;38:128-134.