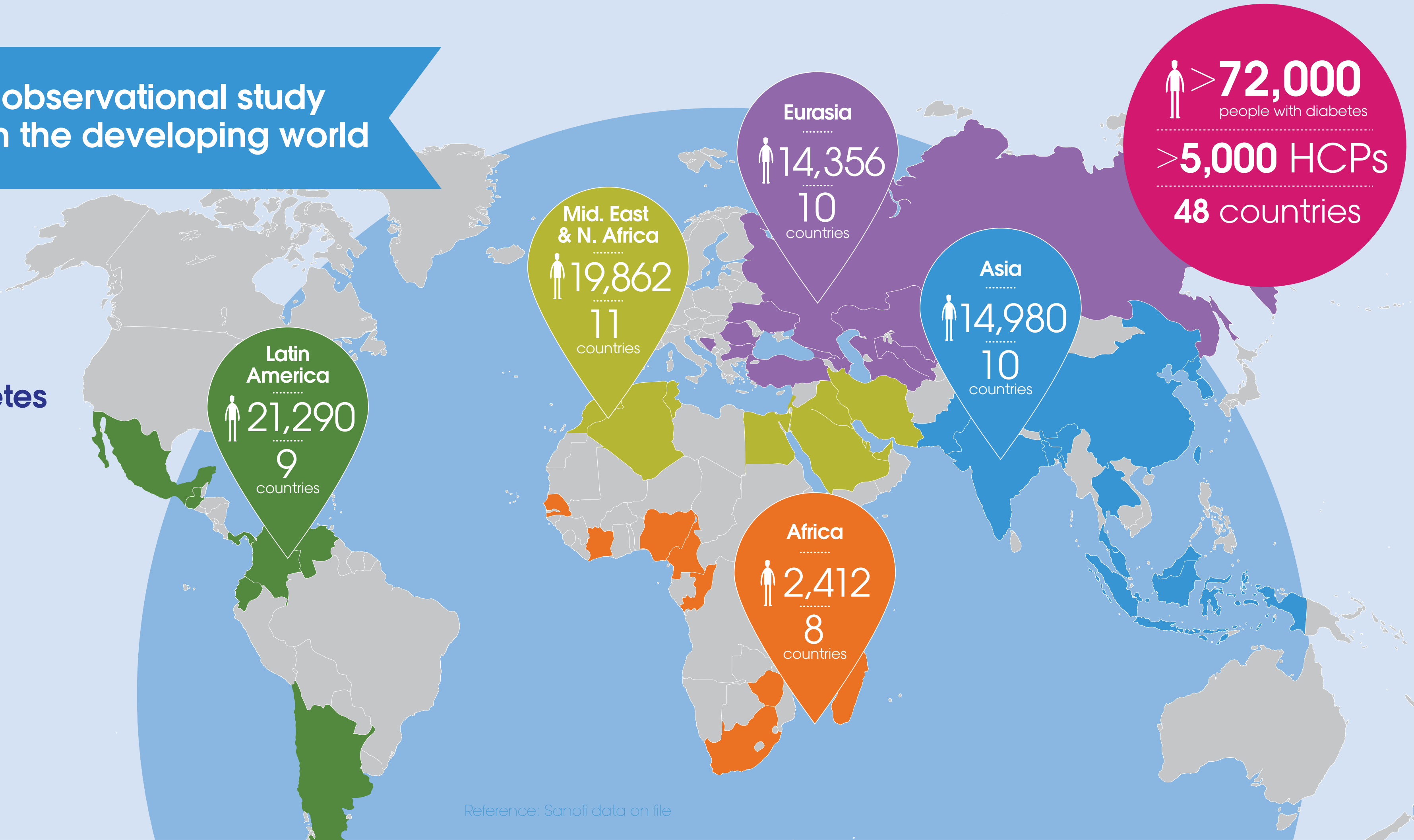


The IDMPS is the largest observational study of adult diabetes care in the developing world

Since 2005 it has provided a unique resource to help support the management of people living with diabetes



# The IDMPS is revealing the real-life challenges of managing diabetes

Q

How many people with diabetes are at a target of HbA1c <7%?



A

In Wave 1 **25.3%** of people with Type 1 & **36.4%** of people with Type 2 diabetes were at **target**<sup>1</sup>

Q

What factors are associated with **hospitalization** in people with Type 2 diabetes?



A

Micro- and macrovascular **complications** and **HbA1c ≥7%** were significant predictors<sup>2</sup>

Q

Does **diabetes education** have a clinical effect in people with Type 2 diabetes?



A

**More people achieved HbA1c <7%** if they had received diabetes education<sup>4</sup>

Q

What are people with Type 2 diabetes **worried about** before starting insulin?



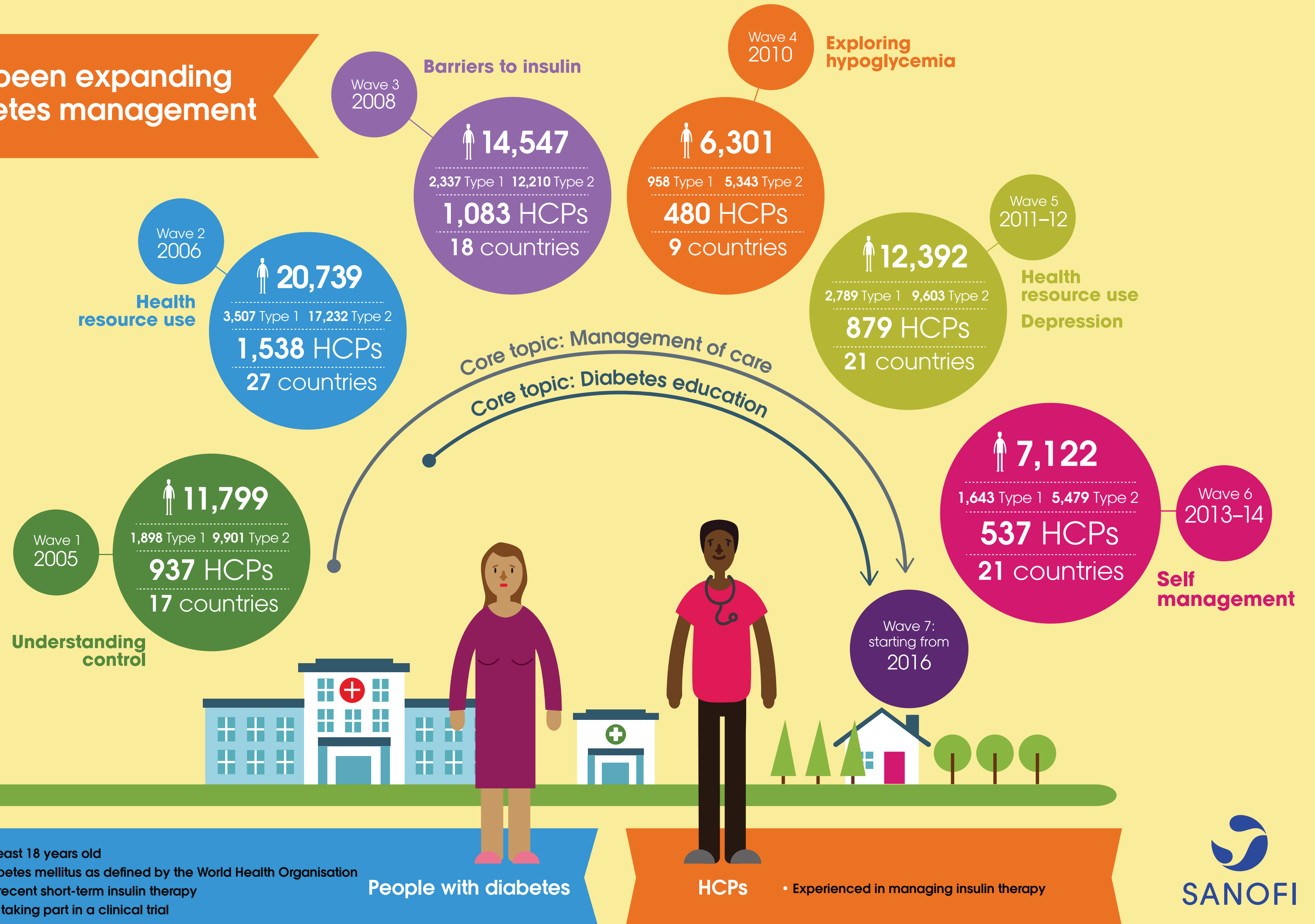
A

Route of **administration** was the main concern for those who were **insulin-naïve**<sup>3</sup>

References: 1. Chan JCN, et al. Diabetes Care 2009;32:227-233; 2. Ringborg A, et al. Int J Clin Pract 2009;63:997-1007  
3. Casciano R, et al. Int J Clin Pract 2011;65:408-414; 4. Gagliardino JJ, et al. Diab & Metab 2012;38:128-134

Since 2005 the IDMPS has been expanding the understanding of diabetes management

Wave specific topics supplement the core objectives to enrich the value of the study



HCP, healthcare provider

The IDMPS is led by a steering committee of diabetes experts

They recognize the unique value of the IDMPS



Fernando  
Lavallo-González  
Mexico



Pablo  
Aschner  
Colombia



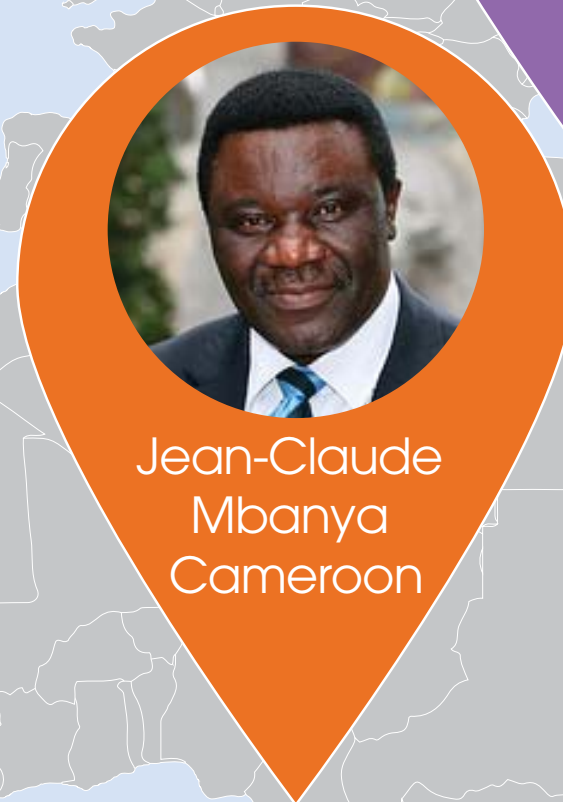
Juan José  
Gagliardino  
Argentina



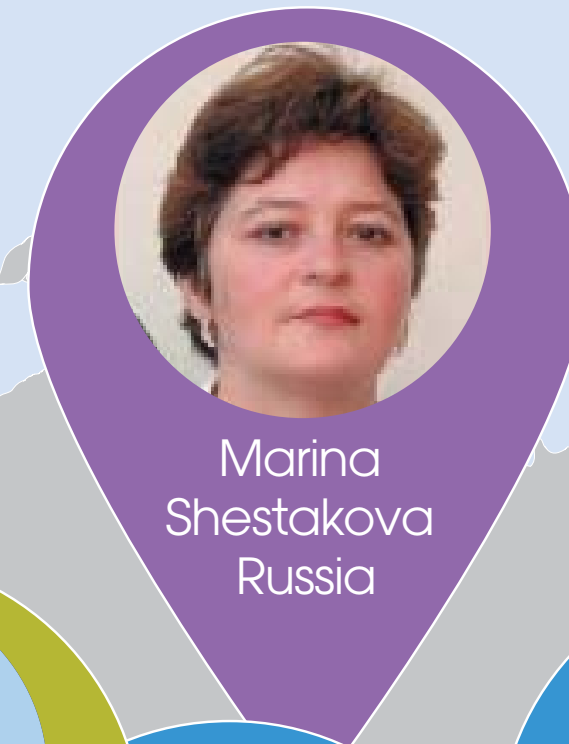
Hasan Ilkova  
Turkey



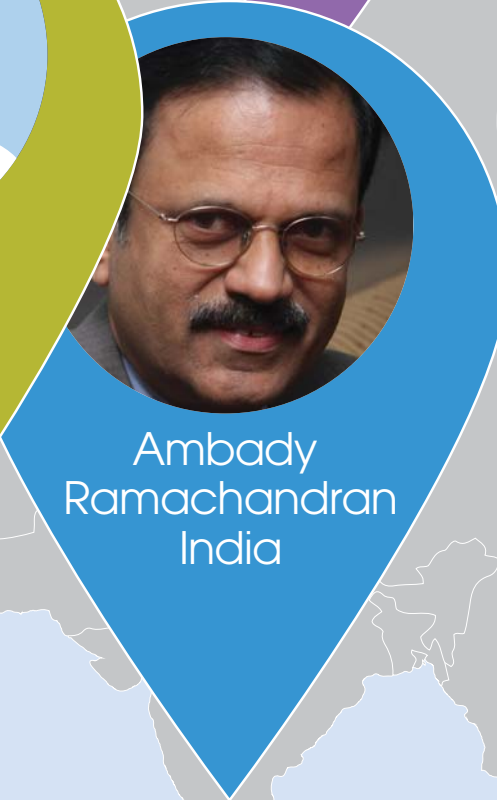
Ghaida  
Kaddaha  
United Arab  
Emirates



Jean-Claude  
Mbanya  
Cameroon



Marina  
Shestakova  
Russia



Ambady  
Ramachandran  
India



Juliana Chan  
Hong Kong

